

SENECA SCRIBE QUICK START GUIDE

Scribe is Seneca's exclusive purpose-built video capture appliance designed for mission critical performance in a compact 1U short-depth form factor. Powered by the 6th generation Intel® Core™ i7 processor, Scribe combines performance and ease of use with a video capture appliance that can be installed anywhere; including A/V racks, desktops, and podiums.

With optimized system resources and balanced drivers, Scribe guarantees smooth integration and reliability you can depend on. Tested and certified with industry leading video capture software, this appliance is designed for use in distance learning, distance medicine, lecture capture, board rooms, courtrooms as well as many other video capture environments.

CONTENTS OF SENECA SCRIBE PACKAGE

Quantity	Item
1	Seneca Scribe Appliance
1	NEMA 5-15P Power Cord

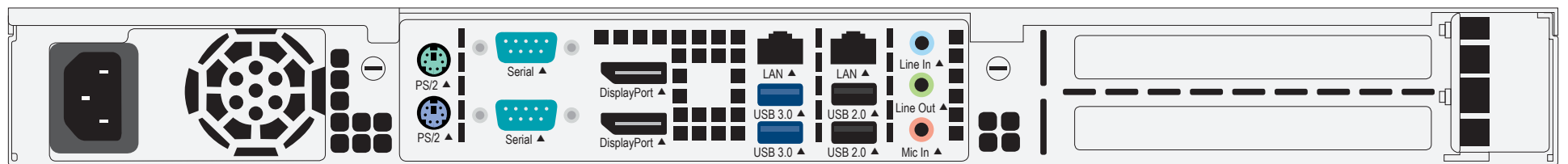
OPTIONAL CONTENT

Quantity	Item
1	Mouse and Keyboard
1	HDMI to DVI Adapter
1	2 Port HDMI splitter with Audio
1	3.5mm to 2× RCA Audio Cable

INSTALLATION

Setting up your system is fast and easy. Simply follow the instructions below.

1. Plug in mouse, keyboard, display and power cable and boot system normally.
2. Follow the setup prompts for Windows (if applicable).



POWERED BY DATAPATH

Seneca Scribe offers a full selection of capture options based on the Datapath VisionAV series. With single, dual, triple and quad channel capture as well as the optional AM2 audio module, Scribe is equipped to handle all of your needs in a professional installation environment.

To utilize your capture cards, please follow the instructions below:

1. Attach your camera feeds (and audio of applicable) to the breakout cables provided in your accessory box.
2. Launch the Datapath "Vision" application to confirm that the inputs are active on your VisionAV capture card.

PANOPTO CERTIFIED

Fully integrated into a turn-key appliance, your Seneca Scribe offers the features and benefits of the Panopto Remote Recorder software.

If purchased with pre-integrated Panopto software, your Scribe capture appliance is plug-and-play ready. On the asset tag affixed to your unit, you will find your log-in information and software version displayed for your convenience. Simply follow the steps below to get your system ready.

1. Enter your log-in information as shown on your asset tag
2. Connect audio/video inputs to capture card input (see image below)
3. Check Panopto Remote Recorder system tray icon to ensure that it's green
4. Log into your customername.hosted.panopto.com site URL
Go to System > Remote Recorders > and configure your new Seneca Scribe

WINDOWS 10 RECOVERY

Software Recovery/Restore Options

Resetting lets you choose whether to keep your files or remove them, and then reinstalls Windows. To get started, go to Settings > Update & Security > Reset this PC > Get started and choose an option.

KEEP MY FILES OPTION

- Reinstalls Windows 10 and keeps your personal files.
- Removes apps and drivers you installed.
- Removes changes you made to settings.
- Removes any apps your PC manufacturer installed. (If your PC came with Windows 10, apps from your PC manufacturer will be reinstalled.)

REMOVE EVERYTHING OPTION

- Reinstalls Windows 10 and removes all your personal files.
- Removes apps and drivers you installed.
- Removes changes you made to settings.
- Removes any apps your PC manufacturer installed. (If your PC came with Windows 10, apps from your PC manufacturer will be reinstalled.)

If you're planning to donate, recycle, or sell your PC, use this option and choose to fully clean the drive. This might take an hour or two, but it makes it harder for other people to recover files you've removed.

RESTORE FACTORY SETTINGS OPTION

- Reinstalls Windows 10 and removes your personal files.
- Removes apps and drivers you installed.
- Removes changes you made to settings.
- Reinstalls any apps your PC manufacturer installed on your PC.

If you do not have access to Apps & Drivers restore, you can visit our drivers Web site at:

<http://drivers.senecadata.com/>

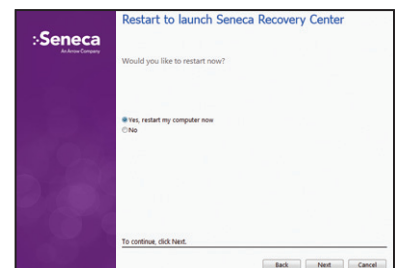
to download the original device drivers. Your computer serial number is required and is located on the bar code label affixed to your system. Please note that Seneca is not responsible for issues related to this download.

WINDOWS 7 RECOVERY

Software Recovery/Restore Options

In the event of a hard drive or software failure, your computer has an integrated software program referred to as the Seneca Recovery Center, that allows you to restore any factory loaded program, device driver, and/or recover your entire system back to the day you received it from the factory.

1. For Windows 7 and Windows Vista; while starting the computer, press the **F8** key and follow steps 2–5. For Windows XP, press the **F10** key and the recovery process will automatically start.
2. Select **Repair Your Computer**, this will launch the **Seneca Recovery Center**. At the welcome screen select **Next** to enter the Seneca System Recovery menu.
3. You can select a Recovery with **Automatic Data Backup or a Full Factory Recovery** (the Full System Recovery option will destroy all user data).
4. After the Full Recovery is complete, you will need to reinstall any programs that were installed after the system left the factory.
5. You will also need to reinstall operating system and application updates to the system as well.



SUPPORT

Should you encounter any issues or need further assistance, please contact our support team:

Normal Business Hours

800.227.3432 option 5

Available Monday–Friday 8am–6pm EST

E-mail

CustomerCare@senecadata.com

