

PLEASE STOP AND READ THIS DOCUMENT



SENECA XNVR QUICK START GUIDE

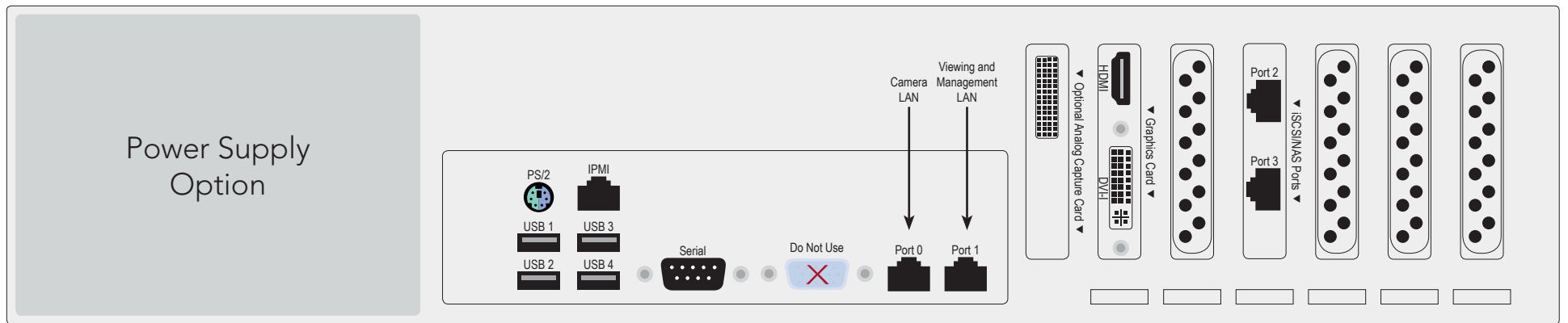
XNVR150

This product contains software that must be registered for continued use and to enjoy the benefits of eligibility for updates. Please take the time to register the operating system and any applications installed on this product.

CONTENTS OF SENECA XNVR150 PACKAGE

| Quantity | Item |
|----------|---|
| 1 | xNVR150 Storage Server |
| 1 | Power Cords (Dependent on power supply included) |
| 1 | Bezel with Keys |
| 1 | DVI to VGA Adapter Cable (As needed) |
| 1 | Analog BNC Fan Out Cable (Only for units with capture card) |

DEFAULT LOG IN INFORMATION
Username: Administrator
Password: P@ssw0rd
 Note: This user has administrative privileges.



MAIN BACK PANEL CONNECTIONS

| I/O Port Connection | Port Usage |
|---------------------|-----------------------------|
| NIC Port 0 | Camera LAN |
| NIC Port 1 | Viewing and Management LANs |
| USB Port 1 | Mouse |
| USB Port 2 | Keyboard |
| USB Port 3 | |
| USB Port 4 | |

| I/O Port Connection | Port Usage |
|-----------------------------|-----------------|
| VGA, HDMI or DVI Port | Video Display |
| iSCSI/NAS Port 2 (Optional) | Network Storage |
| iSCSI/NAS Port 3 (Optional) | Network Storage |

NOTE: For BIOS set-up use HDMI or DVI. Only one monitor can be connected for BIOS set-up.

When the PCIe based graphics card is provided, **DO NOT** use the capped VGA connector for monitor connection.

DEFAULT 1GBE FIXED IP ADDRESSES

| Port | Default Label | IP Address | Mask | Gateway |
|---------------|------------------------|---------------|---------------|-------------|
| NIC 0* | Camera LAN | 192.168.1.253 | 255.255.255.0 | 192.168.1.1 |
| NIC 1* | Viewing and Management | 192.168.1.252 | 255.255.255.0 | 192.168.1.1 |
| 2 iSCSI/NAS** | iSCSI/NAS 1 | 10.0.10.254 | 255.255.255.0 | |
| 3 iSCSI/NAS** | iSCSI/NAS 2 | 10.0.10.253 | 255.255.255.0 | |

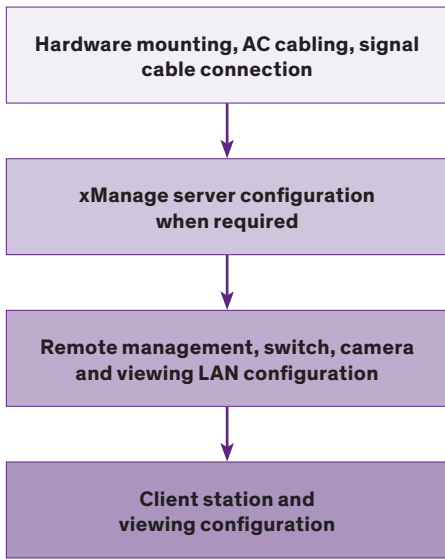
*Fixed non-routable addresses are recommended for Port 0 and Port 1 if DHCP server is not in network
 **This is optional; iSCSI non-routable fixed IP addresses and isolated network is a practical requirement.

BASE CONFIGURATION NOTES

- RAID Set(s) and associated spares configured per purchase order.
- Operating system installed on drive C:
- Video should be stored on Drives D: and higher

SOFTWARE GUIDANCE IS ON THE BACK PAGE →

WARNING: Power on self test takes several minutes until boots process.



SERVER INSTALLATION

1. Before starting the Seneca xNVR150 server the following must be done: Mount and cable hardware. This includes any storage used external to the xNVR appliance.
2. Map and record any changes to be made to factory default settings.
 - (i.e. username, password, IP address, iSCSI address, etc)
3. Connect a keyboard, mouse, and monitor to the server.
4. Referencing manual or Microsoft documentation, make desired additions and changes.

Inability to access appliance or settings could require complete OS and data installation. ALWAYS document configuration changes.

VIDEO MANAGEMENT SOFTWARE INSTALLATION

WARNING:

Time between installation screens may take up to five (5) minutes for OS and VMS. Many VMS's default to Drive C: during setup as the receptacle for video storage. It is strongly suggested to use drive letters D: and higher to contain video data.

1. After initial startup and configuration, the system is ready to install the Video Management Software (VMS).
 - Select the VMS Installer Icon on the OS desktop
2. Once the VMS Installer is open install the necessary prerequisites, which are listed on the Seneca VMS Installer window
3. Select the VMS followed by the VMS Server or Client application. (This process will take several minutes to load).
 - If the VMS is unlisted, go to the manufacturer's website for installation reference
4. Test to verify the VMS application is working
5. **OPTIONAL:** Select the Uninstall Seneca VMS Installer to reclaim the space on the OS drive (NOTE: This will not remove the VMS installed, ONLY the installer).



IP CAMERA PRE-INSTALLATION PREPARATION

1. Select IP camera address range and camera group settings
2. Have advanced network and switch configuration requirements on hand (i.e. port segregation supporting IP SAN traffic, multi-switch settings, POE settings, etc.)
3. Be aware of special operating system requirements such as the following:
 - Drive letter designation for camera video stream storage (DO NOT USE DRIVE C)—we are partial to X.
 - IP address selection for different NIC ports, management port and connections, RAID

IP CAMERA INSTALLATION

1. Connect camera switch 1GbE ports to Port 0
2. Connect and document camera to switch and switch port number
3. Using the camera manufacturer's or VMS software, configure the IP address for the cameras

SENECA XNVR SUPPORT

Seneca customer care group stands ready to assist with any hardware and operating system assistance.

Contact Seneca Digital Security and Surveillance Support:

Normal Business Hours

800.227.3432 option 5

Available Monday–Friday 8am–6pm EST

NOTE: All Video Management Software (VMS) and IP Camera support questions should be directed to the VMS and Camera manufacturers.

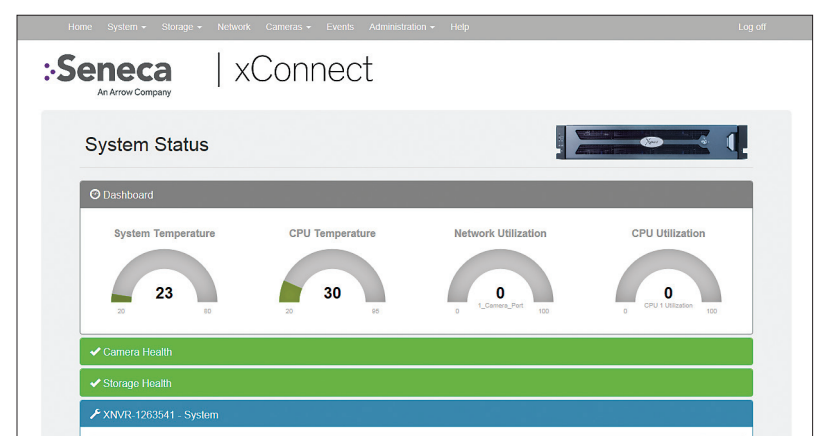
First level of data protection and integrity begins with AC power protection.

Please consult your Seneca Account Manager for properly sized, uninterruptable power supply (UPS).

XCONNECT SOFTWARE OVERVIEW

xConnect is a software package that gives health status on the system (including cameras), pushes out notifications to the xConnect Monitor, and can send email alerts once properly configured.

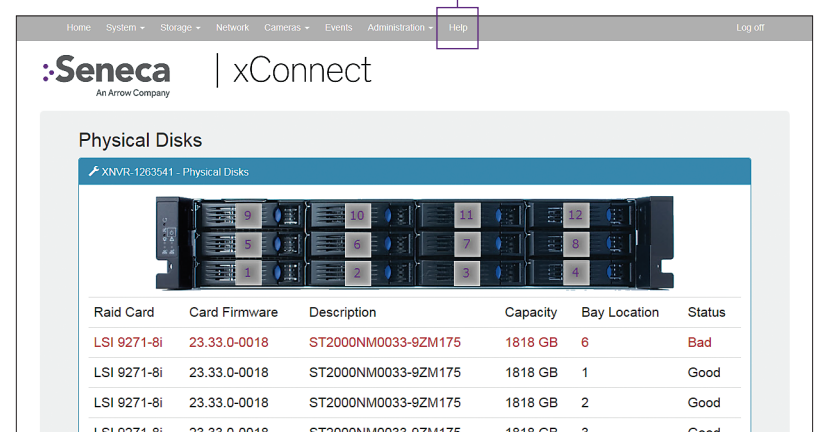
1. Click on this icon to access the xConnect Management Software
2. **Default Log In Information**
Username: admin@xconnect
Password: P@sswOrd



The xConnect Monitor is a desktop application that can run anywhere on the local network. It shows the health status of the four key areas of the xConnect Management Software. Please go to support.senecadata.com to download the software from the module on the landing page.

Additional Help

A full user guide is available within the xConnect Software under the "Help" tab



NOTE: Please reference manual for more detailed configuration information.